

## BEST MANAGEMENT PRACTICES

### CHAPTER 27



## Sulfur can Increase South Dakota Corn Yields

Anthony Bly (Anthony.Bly@sdstate.edu), Ron Gelderman (retired professor, SDSU Plant Science Dept.), and Howard Woodard (Howard.Woodard@sdstate.edu)

Corn sulfur (S) deficiency symptoms include leaf yellowing and/or striping or interveinal chlorosis of new leaves (Fig. 27.1). Corn yield responses to S addition were more likely in sandy no-tillage fields where the surface 2 feet of soil contains < 40 lbs of  $\text{SO}_4\text{-S}$ /acre. Sulfur deficiency can be minimized by applying sulfur-containing fertilizers or manure. This chapter provides information needed to make informed decisions concerning sulfur fertilizer applications.

### A Growing Problem

Sulfur (S) is an essential nutrient for crop production that in the past was largely supplied through atmospheric deposition. However, improvements in air quality have reduced S depositions. For example, from 1972 to 1980,  $\text{SO}_2$  emissions decreased in the United States from 32 million to 26 million tons, which was further reduced to 6.5 million tons in 2011 (Tisdale et al., 1985; Furiness et al., 1998; Jeschke and Diederick, 2010; US-EPA, 2014). Decreasing sulfate depositions have been accompanied by increased applications of sulfur-containing fertilizers. In South Dakota from 2002 to 2010, the use of sulfur-containing fertilizers increased from 18,318 tons to 51,592 tons (USDA-NASS, 2012).

### Sulfur in the Soil

Soil contains between 200 and 1000 lbs of S/acre, which can exist as inorganic  $\text{SO}_4\text{-}^2$ , gypsum ( $\text{CaSO}_4$ ), reduced sulfide ( $\text{S}^{-2}$ ), and organic-S. Plant requirements for S can be obtained from the mineralization of organic matter, the oxidation of sulfide, the solubilization of gypsum, and/or from atmospheric depositions. Sulfate ( $\text{SO}_4\text{-}^2$ ) is an important form of S in the soil. This negatively charge anion can leach with percolating water. Sulfur mineralization converts organic-S to hydrogen sulfide ( $\text{H}_2\text{S}$ ), which is then oxidized to sulfate. Processes that influence microbial activity, such as tillage, will impact sulfur mineralization.

### Plant S Deficiencies

Due to relatively slow mobilization from older leaves to younger leaves, S deficiency generally includes

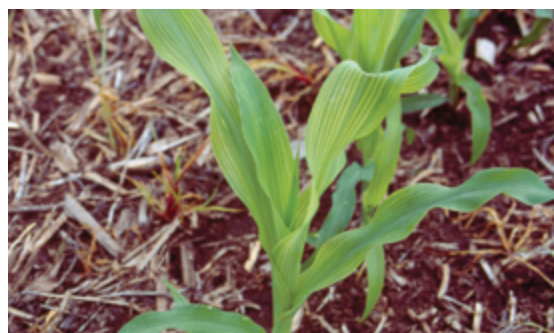


Figure 27.1 Corn sulfur deficiency symptoms.  
(Courtesy: SDSU Jim Gerwing)

yellowing as well as leaf striping of younger leaves (Fig. 27.1). Nitrogen (N) has similar symptoms in corn. However, yellowing is most observed in older leaves. Sulfur deficiency symptoms are most observed in low-organic-matter, no-till corn. Research conducted at 130 locations in South Dakota between 1990 and 2014 indicates that corn responds to S if: 1) the amount of sulfate in the surface 2 feet is < 40 lbs SO<sub>4</sub>-S/acre, 2) no-tillage is used at the site; and 3) the soil texture is relatively coarse (Fig. 27.2). The S source used in these studies was ammonium sulfate and grain yields were adjusted to 15% grain moisture.

Causes of S deficiency may include reduced mineralization resulting from low organic matter contents, cool temperatures, the adoption of reduced-tillage systems where soil organic matter is sequestered, and/or the loss of sulfate with leaching water.

### Collecting and Analyzing Soil Samples

Sulfate-S (SO<sub>4</sub><sup>-2</sup>) is a negatively charged ion that is not strongly held in South Dakota's negatively charged soils. Because SO<sub>4</sub><sup>-2</sup> can move with water percolating through the soil, samples collected from the surface 2 feet for N recommendations can be used for S recommendations. The soil samples should be kept cool and submitted to your soil testing laboratory as soon as possible. The samples can be analyzed for SO<sub>4</sub>-S using Combs et al. (1998). Because the sulfate test is not always accurate, soil sulfate analysis should be used as a starting point for determining a sulfur recommendation. Consider the soil organic matter, soil texture, SO<sub>4</sub>-S, and tillage practices when making a recommendation (Table 27.1).

There are a number of fertilizers that can be used to reduce S deficiencies including manure (Chapter 28). For example, ammonium thiosulfate (12-0-0-26) can be mixed with UAN or ammonium sulfate (21-0-0-24) can be mixed with urea (46-0-0). However, the S contained in Elemental S (0-0-0-90) is not readily available because it requires oxidation prior to plant uptake. Manure from animals that used distillers grains in their rations may contain relatively high concentrations of S.

Because both N and S are needed to produce plant proteins, the ratio between these nutrients can range from 8:1 to 10:1. Typically, if crop requirements for nitrogen are 100 lbs N/acre, then the sulfur requirements will be 7 to 13 lbs S/acre. Approximately 25 lbs of S are harvested in a 15-ton silage crop (Schulte and Kelling, 1992), and cereal grain crops have the highest S requirements while soybeans have the lowest.

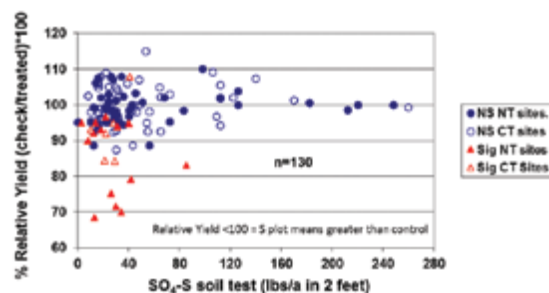


Figure 27.2 The influence of tillage (no-tillage and conventional-tillage) and SO<sub>4</sub>-S amounts in the surface 2 feet on the relative yields in SD studies conducted between 1990 and 2014. Relative yield values < 100 indicate that sulfur fertilizer increased yield.

**Table 27.1 The sulfur recommendations for South Dakota. (Modified from Gerwing and Gelderman, 2005)**

		Soil Texture			
Sulfur Soil Test	Relative S Soil Level	Coarse		Medium/Fine	
		Tilled <sup>A</sup>	Strip or no-till	Tilled <sup>A</sup>	Strip or no-till
lbs/a (0-2ft)		----- lbs S/a recommendation -----			
0-9	Very Low	25	25	25	25
10-19	Low	25	25	15	25
20-29	Medium	15	25	0	15
30-39	High	15	15	0	15
>=40	Very High	0	0	0	0

<sup>A</sup> conventional-tillage

<sup>B</sup> see ipni.net (International Plant Nutrition Institute) for placement guidelines, <http://www.ipni.net/article/IPNI-3268>.

## References and Additional Information

- Camberato, J., S. Maloney, and S. Cateel. 2012. Sulfur deficiency in corn. Department of Agronomy, Purdue University.
- Combs S., J. Denning, and K.D. Frank. 1998. Recommended Chemical Soil Test Procedures for the North Central Region. Missouri Agricultural Experiment Station SB 1001.
- Furiness, C., L. Smith, I. Ran, and E. Cowling. 1998. Comparison of emissions of nitrogen and sulfur oxide to deposition of nitrate and sulfate in the USA by state in 1990. *Environ. Pol.* 102:313-320.
- Franzen D. 2010. North Dakota Fertilizer Recommendation Tables and Equations. North Dakota State University Extension Service. SF-882.
- Gerwing J., and R. Gelderman. 2005. Fertilizer Recommendations Guide EC 750. SDSU, Cooperative Extension Service and U.S. Department of Agriculture. Plant Science
- Gelderman, R., R. Barrick, and M. Rosenberg. 2011. Quantities of plant nutrients contained in crops. South Dakota State University ExEx8009.
- Jeschke, M., and K. Diedrick. 2010. Sulfur fertility for crop production. *CROP INSIGHTS*, Pioneer-Dupont. 20:1-12
- Sawyer, J., B. Lang, D. Barker, and G. Cummins. 2009. Dealing with sulfur deficiencies in Iowa corn production. 2009 Integrated Crop Management Conference, Iowa State University.
- Schulte, E.E., and K.A. Kelling. 1992. Soil and applied sulfur. A2525, R09-92. University of Wisconsin Cooperative Extension.
- Tisdale S.L., W.L. Nelson, and J.D. Beaton. 1985. Soil and fertilizer sulfur, calcium and magnesium. pp.292-343. In *Soil Fertility and Fertilizers*. Fourth edition. Macmillan Publishers. New York, USA.
- USDA-NASS. 2012. South Dakota Agriculture.
- USDA-EPA. 2014. National trends in sulfur dioxide levels.

## Acknowledgements

Support for this document was provided by South Dakota State University, SDSU Extension, South Dakota Corn Utilization Council and International Plant Nutrition Institute (IPNI).



Bly, A, R. Gelderman, and H. Woodward. 2016. Chapter 27: Sulfur can Increase South Dakota Corn Yields. In Clay, D.E., C.G. Carlson, S.A. Clay, and E. Byamukama (eds). iGrow Corn: Best Management Practices. South Dakota State University.

*The preceding is presented for informational purposes only. SDSU does not endorse the services, methods or products described herein, and makes no representations or warranties of any kind regarding them.*

*In accordance with Federal civil rights law and U.S. Department of Agriculture (USDA) civil rights regulations and policies, the USDA, its Agencies, offices, and employees, and institutions participating in or administering USDA programs are prohibited from discriminating based on race, color, national origin, religion, sex, gender identity (including gender expression), sexual orientation, disability, age, marital status, family/parental status, income derived from a public assistance program, political beliefs, or reprisal or retaliation for prior civil rights activity, in any program or activity conducted or funded by USDA (not all bases apply to all programs). Remedies and complaint filing deadlines vary by program or incident.*

*Persons with disabilities who require alternative means of communication for program information (e.g., Braille, large print, audiotope, American Sign Language, etc.) should contact the responsible Agency or USDA's TARGET Center at (202) 720-2600 (voice and TTY) or contact USDA through the Federal Relay Service at (800) 877-8339. Additionally, program information may be made available in languages other than English.*

*To file a program discrimination complaint, complete the USDA Program Discrimination Complaint Form, AD-3027, found online at [http://www.ascr.usda.gov/complaint\\_filing\\_cust.html](http://www.ascr.usda.gov/complaint_filing_cust.html) and at any USDA office or write a letter addressed to USDA and provide in the letter all of the information requested in the form. To request a copy of the complaint form, call (866) 632-9992. Submit your completed form or letter to USDA by:*

(1) mail: U.S. Department of Agriculture  
Office of the Assistant Secretary for Civil Rights  
1400 Independence Avenue, SW  
Washington, D.C. 20250-9410;

(2) fax: (202) 690-7442; or

(3) email: [program.intake@usda.gov](mailto:program.intake@usda.gov).

*USDA is an equal opportunity provider, employer, and lender.*